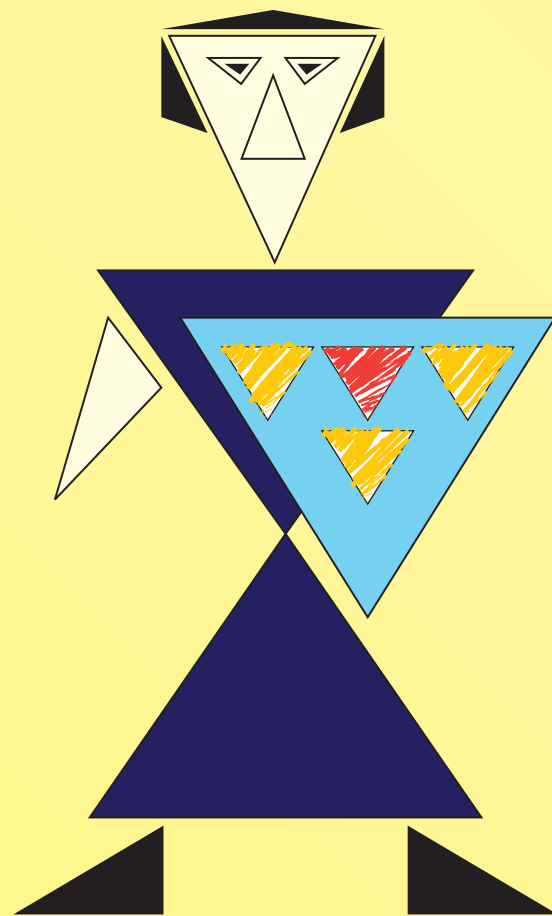
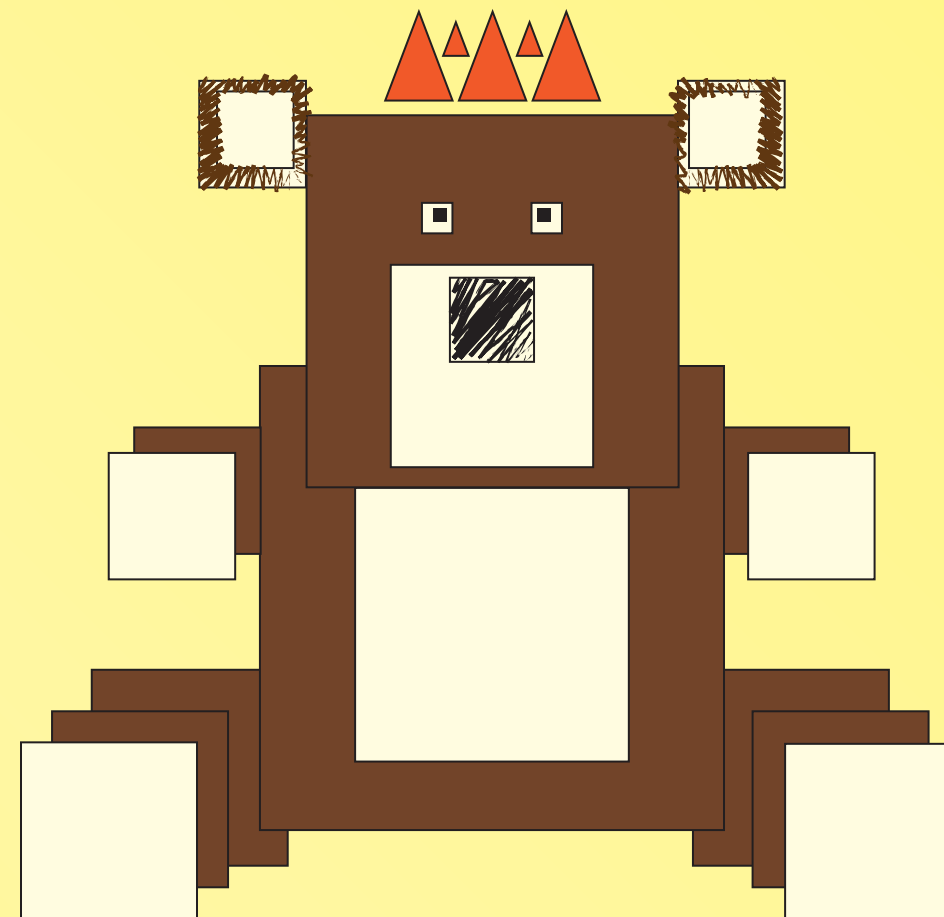


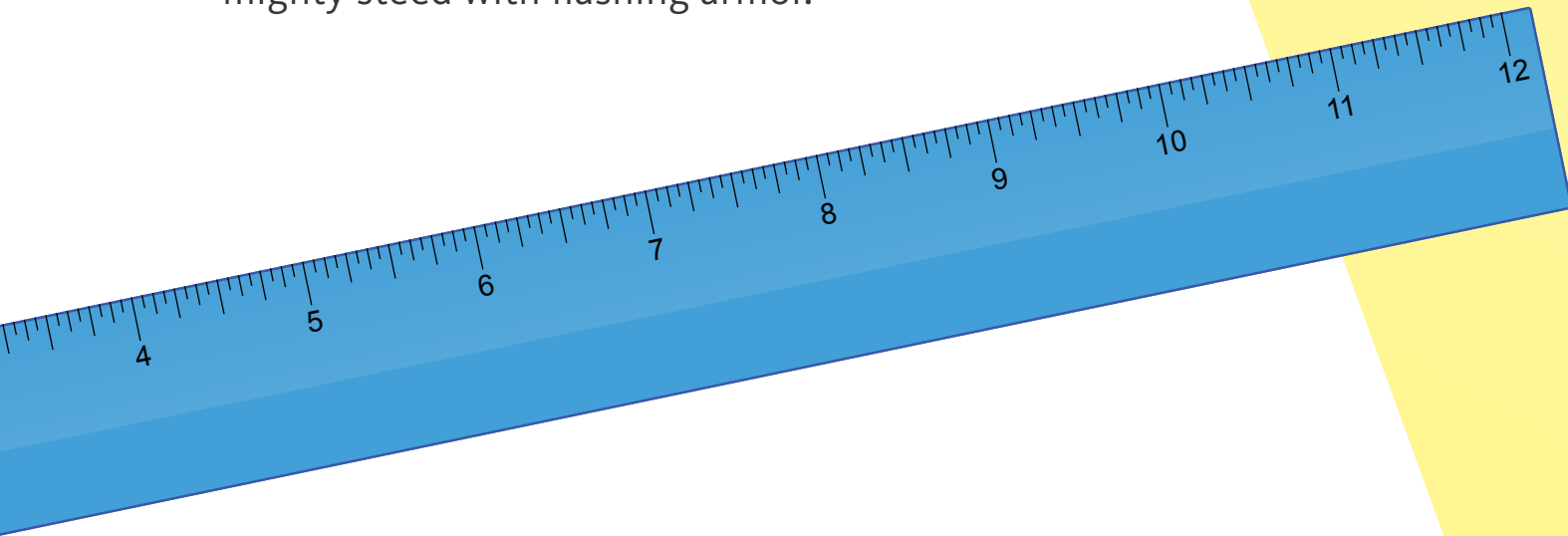
Some triangles have 1 square corner just like the corners in a rectangle. **Triangle Prince** wore boots made of these special triangles that have 1 square corner. **Triangle Prince** was very handsome.



Square Bear liked the triangles in the prince's crown. He wanted a crown, too. Sometimes **Triangle Prince** let **Square Bear** wear the crown.



Triangle Prince needed a horse. Pete drew **Rectangle Horse** for the prince, a swift and mighty steed with flashing armor.



Rectangle Horse was made of many rectangles.
Triangle Prince and **Square Bear** liked **Rectangle Horse**.

